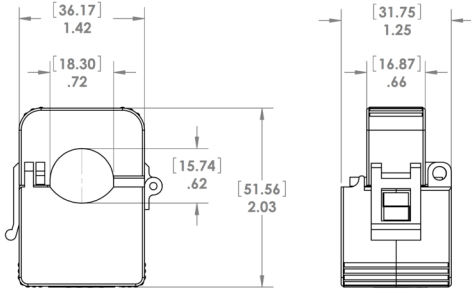


CURRENT TRANSFORMER

CTA1 SERIES

Enclosed Self-Powered Split Core 25, 50, and 100 Amp Current Transformers with 333 mV Output



SPECIFICATIONS

Environment: Indoor Use Only
5 to 176° F (-15 to 80°C)
90% relative humidity

Wires: 6', 18 AWG, 600V Rated

Primary Input: 100A max. AC 50/60 Hz

Secondary Output: 0.333 Vac

Accuracy: 0.5% (typical)

Linearity: 10%-120%

Polarity: White-Hi, Black-Low

Frequency Range: 40-400 Hz

Max Sense Voltage: 600 Vac

Approvals: ETL Listed, CE, RoHS

CTA1 SERIES SELECTION GUIDE

Model #	Primary Input (A)	Secondary Output (V)	Ratio	Accuracy (%)
CT-025A1-333	25	0.333	25A/0.333V	0.8
CT-050A1-333	50	0.333	50A/0.333V	0.5
CT-100A1-333	100	0.333	100A/0.333V	0.5